



# CHANGE MACHINES

CHANGING THE WORLD... ONE BILL AT A TIME





**888-723-4858**



**sales@hamiltonmfg.com**



**www.hamiltonmfg.com**



# CONTENTS

3600RL .....	3
DRS .....	3
RNS .....	4
ER-60 .....	4
3600FL (replaces HS-2/HS-3) .....	5
1200FL-S & 1200FL-C .....	5
2000V / 2600V .....	6
VN-1 .....	6
E-385 / E-770 .....	7
Bill to Bill .....	7
Bill to Bill Mini .....	8
DRS-CCT .....	8
RNS-CCT .....	9
Card and Change Dispenser (CCD) .....	9
Data Access Network (D.A.N.) .....	10
Headers & Bases .....	10
Options .....	10
Tokenotes®.....	10



## Available for use in the USA



## Available for use in Canada

*Note: configuration and available options will differ to USA spec. Please consult your Hamilton sales representative for further information*



## Available for use in Australia

*Note: configuration and available options will differ to USA spec. All Australian-spec machines include Mars® validators and step down transformers. Please consult your Hamilton sales representative for further information*

*All configurations and options in this brochure are for the USA market. Currency is in U.S. dollars.  
Product dimensions are approximate. Subject to change without notice.*



## 3600RL

### Heavy Duty, Rear-Load

The 3600RL offers the most versatility of any rear-load changer. It can be configured with one, two or three high capacity hoppers, and one or two validators. A multi-coin acceptor may be added to fit the needs of your business.

When used with the Data Access Network (D.A.N.), you have the ability to remote into the changer and clear certain error codes and view audits.

A Handheld Kit is required for programming.

### Changes/Pays

\$1, \$5, \$10, \$20 to coins or tokens

### Features

- Hamilton XE validator (with Tokennote® acceptance)
- 1,000 bill stacker
- Cabinet: 7 gauge carbon steel
- Faceplate: 7 gauge stainless steel
- Heater (with XE validator only)
- Weather shield
- Two heavy-duty Medeco® plug locks
- Audit Pro 2000 controller
- Maximum capacity:
  - 1 hopper - 4,800 quarters
  - 2 hopper - 9,600 quarters
  - 3 hopper - 14,400 quarters
- Power: 120 VAC 60 Hz
- Weight: 325 lbs. /147 kg

### Options

- Coinco®, Mars®, or Cashcode® validators
- IDX coin acceptor
- Microcoin acceptor (Australia)
- D.A.N. controller kit
- Token face panel
- Token hopper (must indicate token size when ordering)
- Locking hopper cover
- Out Of Service relay kit
- Handheld Kit (required for programming)
- Portable thermal report printer (works with Audit Pro 2000 Controller)

### Dimensions: U.S. & Metric

Cabinet & minimum wall opening:

34 7/8" H x 21 1/4" W x 14 3/8" D

88.6 cm H x 54 cm W x 36.5 cm D

Faceplate: 38 3/8" H x 24 3/4" W x 3/16" D

97.5 cm H x 63 cm W x 48 cm D



## DRS

### Heavy Duty, Rear-Load

The DRS is a rear-load changer that has two separate changers in one cabinet.

It comes fully-equipped with two identical sets of components. For high volume locations, the DRS includes two high-capacity bulk load hoppers, which have a 2,400 quarter capacity (\$1,200) each. That's a total of \$2,400 in ONE cabinet.

When used with the Data Access Network (D.A.N.), you have the ability to remote into the changer and clear certain error codes and view audits.

### Changes/Pays

\$1, \$5, \$10, \$20 to coins or tokens

### Features

- Hamilton XE validator (with Tokennote® acceptance)
- 1,000 bill stacker
- Cabinet: 11 gauge carbon steel
- Faceplate: 7 gauge stainless steel
- Heater (with XE validator only)
- Weather shield
- Two heavy-duty Medeco® plug locks
- C-2000 controller
- Maximum capacity: 9,600 Quarters
- Power: 120 VAC 60 Hz
- Weight: 230 lbs/99.8 kg

### Options

- Coinco®, Mars®, or Cashcode® validators
- D.A.N. controller kit
- Token face panel
- Token hopper (must indicate token size when ordering)
- Locking hopper cover
- Out Of Service relay kit
- Audit Pro 2000 controller (Handheld Kit required for programming)
- Handheld kit
- Portable thermal report printer (works with Audit Pro 2000 controller)

### Dimensions: U.S. & Metric

Cabinet & minimum wall opening:

34-3/4" H x 18-3/16" W x 14-7/16" D

88.3 cm H x 46.4 cm W x 36.8 cm D

Faceplate: 38-5/16" H x 21-5/8" W

97.3 cm H x 54.9 cm W



## RNS



### Heavy Duty, Rear-Load

The RNS changer features a single bill acceptor with a high capacity coin hopper that holds up to 4,800 quarters (\$1,200), and a wrap-around style door for added security.

When used with the Data Access Network (D.A.N.), you have the ability to remote into the changer to clear certain error codes and view audits.

### Changes/Pays

\$1, \$5, \$10, \$20 to coins or tokens

### Features

- Hamilton XE validator (with Tokennote® acceptance)
- 1,000 bill stacker
- Cabinet: 11 gauge carbon steel
- Faceplate: 7 gauge stainless steel
- Heater (with XE validator only)
- Weather shield
- Two heavy-duty Medeco® plug locks
- C-2000 controller
- Maximum capacity: 4,800 quarters
- Power: 120 VAC 60Hz
- Weight: 150 lbs/68 kg

### Options

- Coinco® or Mars® validators
- D.A.N. controller kit
- Token face panel
- Token hopper (must indicate token size when ordering)
- Locking hopper cover
- Out Of Service relay kit
- Audit Pro 2000 controller (Handheld Kit required for programming)
- Handheld Kit
- Portable thermal report printer (works with Audit Pro 2000 controller)

### Dimensions: U.S. & Metric

Cabinet & minimum wall opening:  
 34-1/2" H x 9" W x 13" D  
 89.6 cm H x 22.9 cm W x 33 cm D  
 Faceplate: 38-1/2" H x 12" W  
 97.8 cm H x 30.5 cm W



## ER-60



### Heavy Duty, Rear-Load

The ER-60 is our most economical rear-load changer. It features all of the same high quality components as the RNS, with a maximum hopper capacity of 2,400 quarters (\$600).

When used with the Data Access Network (D.A.N.), you have the ability to remote into the changer and clear certain error codes and view audits.

### Changes/Pays

\$1, \$5, \$10, \$20 to coins or tokens

### Features

- Hamilton XE validator (with Tokennote® acceptance)
- 1,000 bill stacker
- Cabinet: 7 gauge stainless steel
- Faceplate: 7 gauge stainless steel
- Heater (with XE validator only)
- Weather shield
- Two heavy-duty Medeco® plug locks
- C-2000 controller
- Maximum capacity: 2,400 quarters
- Power: 120 VAC, 60 Hz
- Weight: 135 lbs/61 kg

### Options

- Coinco® or Mars® validators
- D.A.N. controller kit
- Token face panel
- Token hopper (must indicate token size when ordering)
- Out Of Service relay kit
- Audit Pro 2000 controller (Handheld Kit required for programming)
- Handheld Kit
- Portable thermal report printer (works with Audit Pro 2000 controller)

### Dimensions: U.S. & Metric

Cabinet & minimum wall opening:  
 20-3/4" H x 15" W x 13" D  
 52.71 cm H x 38.10 cm W x 33.02 cm D  
 Faceplate: 24-3/4" H x 18" W  
 62.87 cm H x 45.72 cm W



## 3600FL (replaces HS-2/HS-3)



### Heavy Duty, Front-Load

The 3600FL changer offers the most versatility of any front-load changer. It comes with one validator and can be configured with one, two, or three high capacity hoppers. A multi-coin acceptor may be added to fit the needs of your business.

When used with the Data Access Network (D.A.N.), you have the ability to remote into the changer and clear certain error codes and view audits.

A Handheld Kit is required for programming.

### Changes/Pays

\$1, \$5, \$10, \$20 to coins or tokens

### Features:

- Hamilton XE validator (with Tokennote® acceptance)
- 1,000 bill stacker
- Cabinet: 11 gauge carbon steel
- Weather shield
- Two heavy-duty Medeco® plug locks
- Audit Pro 2000 controller
- Maximum capacity:
  - 1 Hopper - 4,800 quarters
  - 2 Hopper - 9,600 quarters
  - 3 Hopper - 14,400 quarters
- Power: 120 VAC 60 Hz
- Weight: 300 lbs/136.1kg

### Options:

- Coinco®, Mars®, or Cashcode® validators
- Locking stacker cover (with XE validator only)
- IDX coin acceptor
- Microcoin acceptor (Australia)
- Heater (with XE validator only)
- D.A.N. controller kit
- Token face panel
- Token hopper (must indicate token size when ordering)
- Locking hopper cover
- Out Of Service relay kit
- Large console base
- Handheld kit (required for programming)
- Portable thermal report printer (works with Audit Pro 2000 controller)

### Dimensions: U.S. & Metric

41-7/8" H x 20" W x 12-7/8" D  
105 cm H x 50.8 cm W x 32.7cm D



## 1200FL-S & 1200FL-C



*FL-S recommended for outdoor use*

*FL-C recommended for indoor use*

### Heavy Duty, Front-Load

The 1200FL-S features an 11-gauge stainless steel cabinet, while the 1200FL-C is built with an 11-gauge carbon steel cabinet. Both machines feature a single validator with a single high capacity hopper that holds 4,800 quarters (\$1,200).

When used with the Data Access Network (D.A.N.), you have the ability to remote into the changer and clear certain error codes and view audits.

### Changes/Pays

\$1, \$5, \$10, \$20 to coins or tokens

### Features:

- Hamilton XE validator (with Tokennote® acceptance)
- 1,000 bill stacker
- Cabinet: 11 gauge stainless steel or 11 gauge carbon steel
- Heater (with XE validator only, FL-S only)
- Weather shield
- Two heavy-duty Medeco® plug locks
- C-2000 Controller
- Max capacity: 4,800 quarters
- Power: 120 VAC 60 Hz
- Weight: 1200FL-S 130 lbs./59 kg;  
1200FL-C 160 lbs./72.7 kg

### Options:

- Coinco®, Mars®, or Cashcode® validators
- Locking stacker cover
- IDX coin acceptor
- D.A.N. controller kit
- Token face panel
- Token hopper (must indicate token size when ordering)
- Locking hopper cover
- Out Of Service relay kit
- Medium console base
- Audit Pro 2000 controller (Handheld Kit required for programming)
- Handheld kit
- Portable thermal report printer (works with Audit Pro 2000 controller)

### Dimensions: U.S. & Metric

26" H x 19 1/8" W x 13" D  
66.04 cm H x 48.6 cm W x 33cm D



## 2000V/2600V



*Recommended for indoor attended locations*

### High Capacity, Economy

The 2000V features a single validator with a single high-capacity hopper that holds 8,000 quarters (\$2,000), and an optional coin acceptor. The 2600V features a second hopper that holds an additional 2,400 quarters (\$600).

### Changes/Pays

\$1, \$5, \$10, \$20 to coins or tokens

### Features

- Coinco® validator
- 1,000 bill stacker
- Cabinet: 12 gauge carbon steel
- Four-point high security locking mechanism with Medeco® plug locks
- C-2000 controller
- Maximum capacity:
  - 2000V - capacity 8,000 quarters
  - 2600V - capacity 10,400 quarters
- Weight: 135 lbs/76.7 kg

### Options

- XE, Mars®, or Cashcode® validators
- Locking stacker cover (with XE validator only)
- IDX coin acceptor
- Token face panel
- Token hopper (must indicate token size when ordering)
- Out Of Service relay kit
- Blue, green, red, or black & white face panel
- Header, base and footer kit
- Audit Pro 2000 Controller (Handheld Kit required for programming)
- Handheld Kit
- Portable thermal report printer (works with Audit Pro 2000 controller)

### Dimensions: U.S. & Metric

34" H x 18" W x 13 ¼" D

86.4 cm H x 45.7 cm W x 33.7 cm D

## VN-1



*Recommended for indoor attended locations*

### Medium Capacity, Front-Load

The VN-1 Changer features a single validator with a single high capacity hopper that holds 4,800 quarters (\$1,200). It is designed for vending areas and may be purchased with an optional header and base kit for mounting.

### Changes/Pays

\$1, \$5, \$10, \$20 to coins or tokens

### Features

- Hamilton XE validator (with Tokennote® acceptance)
- 1,000 bill stacker
- Cabinet: 12 gauge carbon steel
- Removable metal faceplate in matte black finish
- Three-point high security locking system with Medeco® plug locks
- C-2000 controller
- Maximum capacity: 4,800 quarters
- Power: 120 VAC 60 Hz
- Weight: 115lbs/52 kg

### Options

- Coinco® or Mars® validators
- Locking stacker cover (with XE validator only)
- Token face panel
- Token hopper (must indicate token size when ordering)
- Locking hopper cover
- Out Of Service relay kit
- Red cabinet
- Header and base kit
- Audit Pro 2000 Controller (Handheld Kit required for programming)
- Handheld Kit
- Portable thermal report printer (works with Audit Pro 2000 controller)

### Dimensions: U.S. & Metric

36-3/8" H, 9-15/16" W, 13-1/4" D

92.4 cm H x 25.4 cm W x 33.6 cm D



## E-385 / E-770



### Recommended for indoor attended locations Low Capacity, Front-Load Economy Changers

The E-385 and E-770 Economy Changers are designed to provide reliability at a lower cost without sacrificing quality.

The E-385 features a single validator with a single hopper that holds 1,540 quarters (\$385).

The E-770 features a second hopper that brings the capacity to 3,080 quarters (\$770).

#### Changes/Pays

**E385** - \$1, \$5, \$10, \$20 to coins or tokens

**E770** - \$1, \$5, \$10, \$20 to coins or tokens

#### Features

- Coinco® validator
- 14 gauge carbon steel
- Three-point high security locking system with Medeco® plug locks
- C-2000 controller
- Maximum capacity:  
E385 - 1,540 quarters  
E770 - 3,080 quarters
- Power: 120 VAC 60 Hz
- Weight:  
E-385 – 68 lbs/30.8 kg  
E-770 – 75 lbs/34.0 kg

#### Options

- Token face panel
- Token hopper (must indicate token size when ordering)
- Header and base kit
- Red cabinet

#### Dimensions: U.S. & Metric

22-3/8" H x 12" W x 15-1/4" D

57.38cm H x 30.48cm W x 38.74cm D



## BILL TO BILL



### Heavy Duty Rear-Load Changer

Give customers more bill changing options with the Hamilton Bill Dispenser series. Break larger bills down to smaller bills, and coins.

The Bill to Bill dispenser is offered with a dual cassette to give more versatility. The optional coin hopper will allow dispensing of either coins or tokens along with bills. Choose from Hamilton's XE validator, or several third party validators. With the Mars® validator, you can accept up to a \$100 bill.

A Handheld Kit is required for programming.

#### Changes/Pays

\$1, \$5, \$10, \$20 to bills, coins or tokens

#### Features:

- Hamilton XE validator
- 1,000 bill stacker
- Cabinet 11 gauge stainless steel
- Faceplate: 7 gauge stainless steel
- Weather shield
- Two heavy-duty Medeco® locks
- EGL controller (D.A.N. compatible)
- Maximum capacity: 4,800 quarters
- Dual bill dispenser
- Power: 120 VAC 60Hz
- Weight: 230 lbs/104.3 kg

#### Options

- Mars®, Coinco®, or Cashcode® validator
- Cabinet heater
- Coin hopper (dispense quarters, dollar, or two dollar coins)
- Token hopper (must indicate token size when ordering)
- Locking hopper cover
- Out Of Service relay kit
- Handheld Kit (required for programming)
- Portable thermal report printer

#### Dimensions: U.S. & Metric

Cabinet & Minimum Wall Opening:

34 3/4" H x 18 3/16" W x 14 7/16" D

88.3 cm H x 46.4 cm W x 36.8 cm D.

Faceplate: 38 5/16" H x 21 5/8" W

97.3 cm H x 54.9 cm W





## BILL TO BILL MINI



### Compact Bill Dispensing Rear-Load

The Bill to Bill Mini features the same high-quality components as the Bill to Bill changer, but takes up a smaller footprint.

The bill dispenser is offered with a dual cassette to give greater versatility. Choose from Hamilton's XE bill validator or several third party validators. With the Mars® validator, accept up to a \$100 bill.

A Handheld Kit is required for programming.

### Changes/Pays

\$1, \$5, \$10, \$20 to bills

### Features:

- Hamilton XE validator
- 1,000 bill stacker
- Cabinet: 11 gauge stainless steel
- Faceplate: 7 gauge stainless steel
- Weather shield
- Two heavy-duty Medeco® locks
- EGL controller (D.A.N. compatible)
- Dual bill dispenser
- Power: 120 VAC 60Hz
- Weight: 50 lbs/22.7 kg

### Options:

- Mars®, Coinco®, or Cashcode® validator
- Out Of Service relay kit
- Handheld Kit (required for programming)
- Portable thermal report printer

### Dimensions: U.S. & Metric

Cabinet & Minimum Wall Opening:

24 1/4" H x 15" W x 14" D

88.3 cm H x 46.4 cm W x 36.8 cm D

Faceplate: 28 1/4" H x 18" W

97.3 cm H x 54.9 cm W



## DRS-CCT



### Dual Rear-Load Changer with Credit Card to Token Capabilities

The DRS-CCT is a dual rear-load changer that is designed to accept cash and dispense change or tokens on one side of the machine, as well as accept credit cards and Customer Value Cards to dispense tokens on the second side of the machine. Installation requires a CAT 5 line to each side of the machine for data transmission through the high speed Internet connection.

Requires the Data Access Network (D.A.N.) and a Handheld Kit for programming.

### Changes/Pays

\$1, \$5, \$10, \$20 to coins or tokens; credit card to tokens

### Features:

- Credit card reader
- Hamilton XE validator (with Tokenote® acceptance)
- 1,000 bill stacker
- Cabinet 11 gauge carbon steel
- Faceplate 7 gauge stainless steel
- Heater (with XE validator only)
- Weather shield
- Two heavy-duty Medeco® plug locks
- DTV controller for credit card side
- DCC controller for changer side
- Maximum capacity: 4,800 quarters
- Power: 120 VAC 60 Hz
- Weight: 220 lbs/99.8 kg

### Options:

- Coinco® or Mars® validators
- Token face panel
- Token hopper (must indicate token size when ordering)
- Locking hopper cover
- Out Of Service relay kit
- Handheld Kit (required for programming)

### Dimensions: U.S. & Metric

Cabinet & Minimum Wall Opening:

34 3/4" H x 18 1/4" W x 14 7/16" D

88.3 cm H x 46.4 cm W x 36.8 cm D

Faceplate: 38 5/16" H x 21-5/8" W

97.3 cm H x 54.9 cm W



## RNS-CCT

### Rear-Load Credit Card to Token Changer

The RNS-CCT is a single rear-load changer designed to only accept credit cards or Customer Value Cards and dispense tokens. Customer Value Cards work just like a credit card. Use them to promote return business by offering bonus token payouts for higher dollar purchases.

Installation requires a CAT 5 line to the machine for data transmission through the high speed Internet connection.

Requires the Data Access Network (D.A.N.) and a Handheld Kit for programming.

### Changes/Pays

Credit card to tokens

### Features:

- Credit card reader
- Cabinet: 11 gauge carbon steel
- Faceplate: 7 gauge stainless steel
- Two heavy-duty Medeco® plug locks
- DTV controller
- Maximum capacity: 4,800 quarter-sized tokens
- Power: 120 VAC 60 Hz
- Weight: 125 lbs/56.7

### Options:

- Locking hopper cover
- Out Of Service relay kit
- Handheld Kit (required for programming)

### Dimensions: U.S. & Metric

Cabinet & Minimum Wall Opening:

34 1/2" H x 9" W x 13" D

89.6 cm H x 22.9 cm W x 33 cm D

Faceplate:

38-1/2" H x 12" W

97.8 cm H x 30.5 cm W



## CARD AND CHANGE DISPENSER (CCD)

### Rear-Load Coin Changer and Customer Value Card Dispenser

The Hamilton Card and Change Dispenser (CCD) offers two machines in one cabinet.

The CCD can be used as a normal change machine and to promote the use of your automatic bays, self serve bays, vacuums, and pet washes by selling your very own Customer Value Cards! Your customers can select between new Customer Value Card sales, checking balances, and recharging existing cards.

Your customers can also print receipts at the CCD for their transactions in the self serve bays.

Requires the Data Access Network (D.A.N.) and a Handheld Kit for programming.

### Changes/Pays

\$1, \$5, \$10, \$20 to coins or tokens

### Features:

- Hamilton XE validator (with Tokennote® acceptance)
- 1,000 bill stacker
- Cabinet 11 gauge stainless steel
- Faceplate 7 gauge stainless steel
- Weather shield
- Two heavy-duty Medeco® plug locks
- EGL controller
- Backlit display
- Maximum capacity:
  - 4,800 quarters
  - 200 cards
- Power: 120 VAC 60Hz
- Approximate weight: 230 lbs/117.9 kg

### Options:

- Coinco®, Mars®, or Cashcode® validators
- Cabinet heater
- Locking hopper cover
- Out Of Service relay kit
- Handheld Kit (required for programming)

### Dimensions: U.S. & Metric

Cabinet & Minimum Wall Opening:

34 3/4" H x 18 1/4" W x 20 5/16" D

88.3 cm H x 46.4 cm W x 52.4 cm D

Faceplate:

38 1/4" H x 21 5/8" W

97.2 cm H x 54.9 cm W



## DATA ACCESS NETWORK (D.A.N.)

Required for DRS-CCT, RNS-CCT and CCD.

Optional with 3600, Bill to Bill, Bill to Bill Mini, 1200, RNS, DRS, and ER-60.

The Data Access Network (D.A.N.), is a powerful network that will provide you with a more convenient method of keeping track of your business. The D.A.N. comes preloaded with Windows Embedded Standard 7, all of the software needed to achieve greater levels of productivity from your business.

### What you will need:

- High speed internet connection with static IP
- Uninterruptible power supply (UPS)
- Router
- 8-port switch
- Cat 5, Cat 5E or Cat 6 cable
- For a complete list of component requirements specific to your location and setup, contact Hamilton

### DELUXE Model - System Highlights:

- Industrial PC with touch screen mounted in heavy duty cabinet housing
- Integrated Customer Value Card (CVC) reader (to charge credit cards, activate new CVC cards, check balances, and add value to existing CVC cards)

### BASIC Model - System Highlights:

- Industrial PC (without touch screen) in heavy duty cabinet housing
- Requires customer-supplied monitor, mouse, and keyboard
- Optional Customer Value Card (CVC) reader

### ECONO Model - System Highlights:

- Industrial PC (without touch screen, without cabinet housing)
- Requires customer-supplied monitor, mouse, and keyboard

### Dimensions: U.S. & Metric

D.A.N. Cabinet Size:

20" H x 19 7/8" W x 5" D

5.1 cm H x 50.5 cm W x 12.7 cm D

## HEADERS & BASES

### Header & Base Kit

For 72" in-line banking. For use with the VN-1, E385/E-770 and 2000V/2600V changers.

Color options: black or red (red not available for 2000V model changers)

### Console Bases

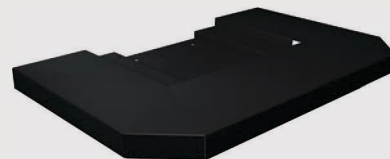
Large console base available for the 3600FL series changers.

Medium console base available for the 1200FL series changers.

Color options: grey or black



VN-1 shown with Header & Base Kit



Footer for 2000V/2600V



Medium console base



Large console base

## OPTIONS

### Validators

Choose from the Hamilton XE with Tokenote® acceptance, Mars®, Cashcode®, or Coinco® validators.

### Handheld Kit

A convenient way to view audit data and change payout options. All coin, bill and Tokenote® payout transactions are displayed on the LCD screen (not available for the E385/E770).

### Portable Thermal Printer

Print hard copy audit reports. The printer can be purchased with the Audit Pro 2000/Handheld to print audit data.

### Token Face Panel

For changers dispensing tokens, a token face panel is available at no additional cost.

### Coin Acceptors

A Slugbuster® or IDX® coin acceptor is available for the 3600RL, 3600FL, or 1200FL. An IDX® coin acceptor is available for the 2000/2600V series changers. Microcoin acceptors are used in all Australian-spec machines.

### Out-of-Service Relay Kit

Permits connection of your Hamilton product to the wash computer or a paging system to notify you of a service problem (not available in the E385/E770 changers).

### Locking Hopper Cover

Deters removal of coins from an open hopper (not available in the E385/E770, ER-60 or 2000V/2600V changers).

### Locking Stacker Cover

Helps prevent removal of currency from the stacker in front-load model changers (for use with XE validator only).

### Tokenotes®

For changers with the Hamilton XE validator, Tokenote® acceptance is available. Tokenotes® are used the same as paper currency, but reduce the amount of cash handling within your business.



# CHANGE MACHINES



**HAMILTON**

1026 Hamilton Dr.  
Holland, OH 43528

P: 419.867.4858  
P: 888.723.4858  
F: 419.867.4850

[hamiltonmfg.com](http://hamiltonmfg.com)